

A a

Affe



B b

Biene



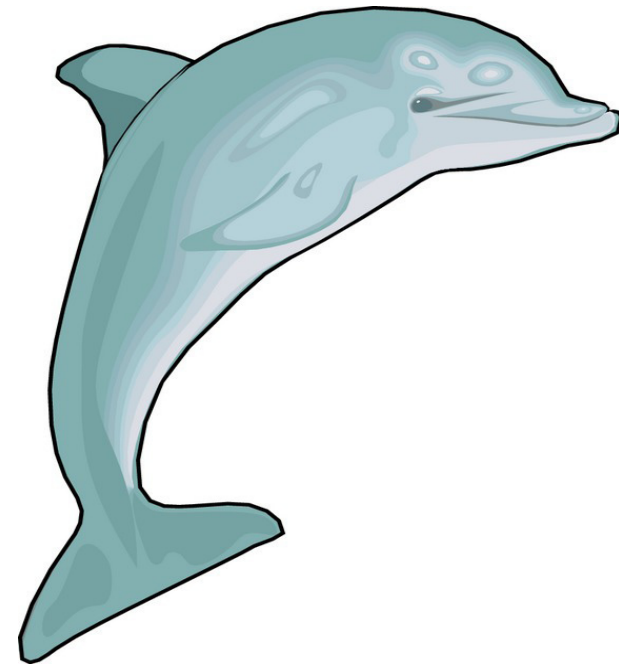
C c

Chamäleon



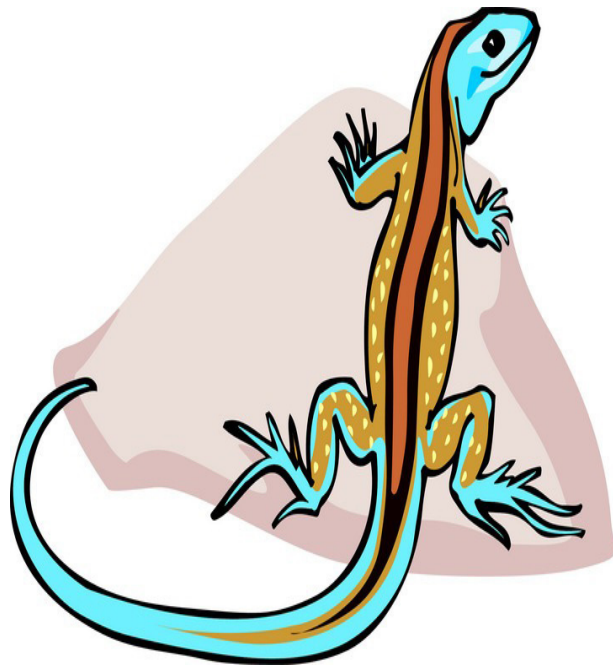
D d

Delphin



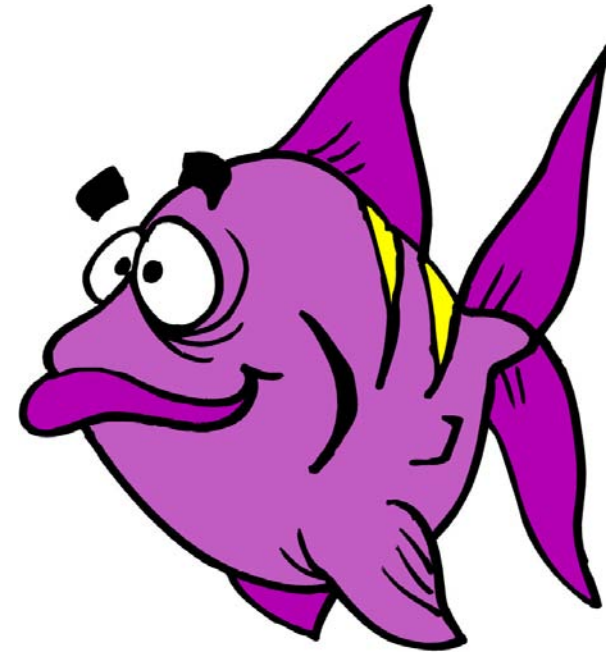
E e

Eidechse



F f

Fisch



G g

Giraffe



H h

Hund



I i

Igel



J j

Jaguar



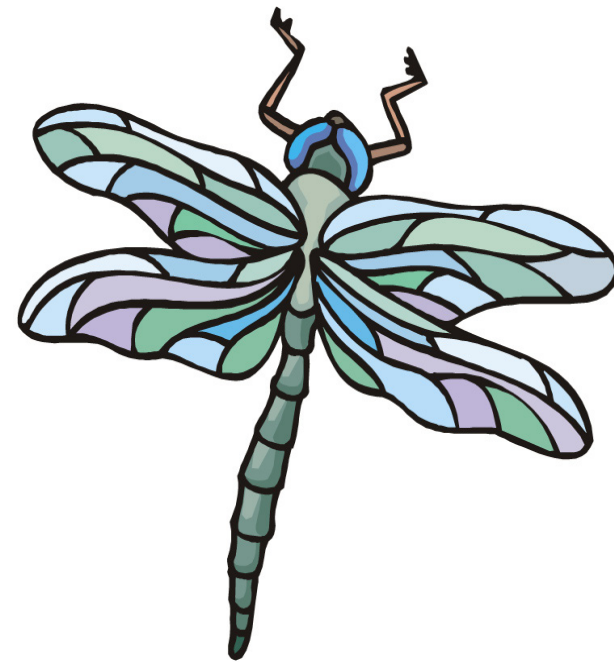
K k

Katze



L l

Libelle



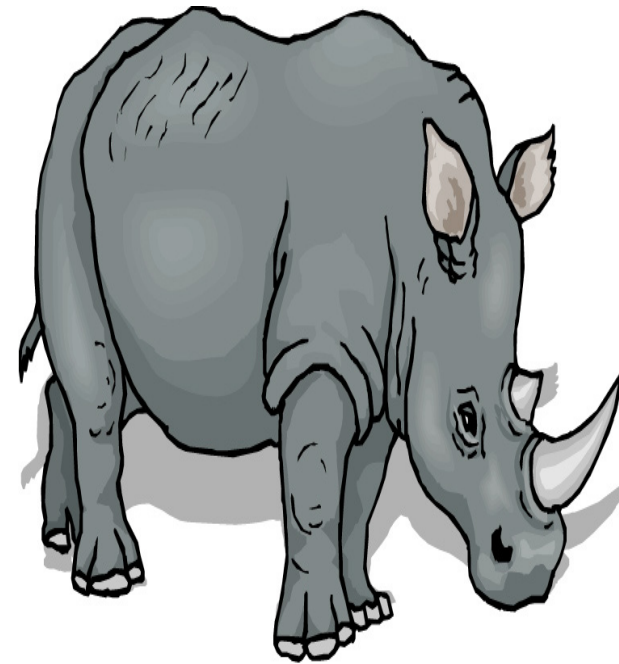
M m

Marienkäfer



N n

Nashorn



O o

Otter



P p

Pandabär





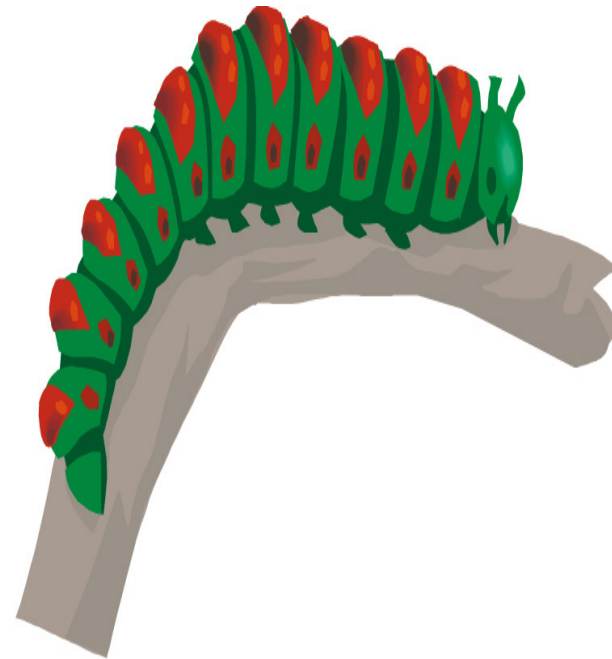
Qu qu

Qualle



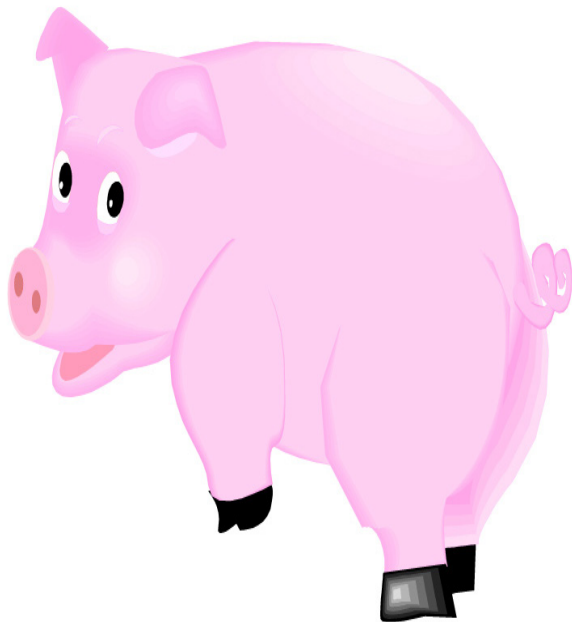
R r

Raupe



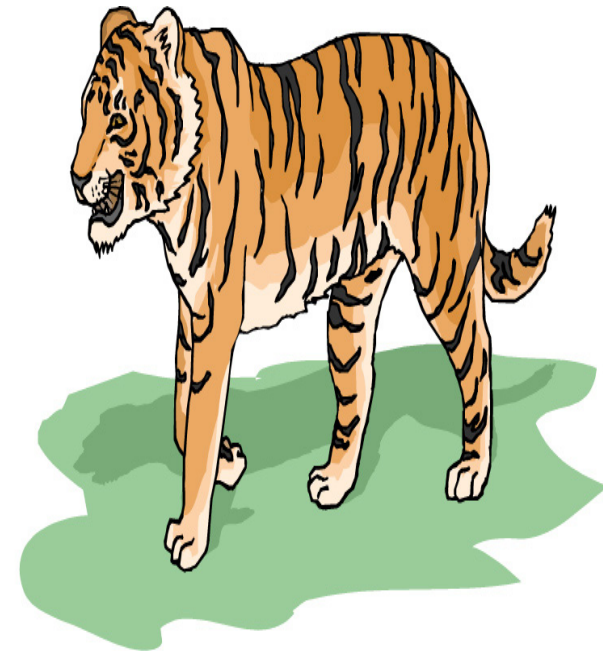
S s

Schwein



T t

Tiger



U u

Uhu



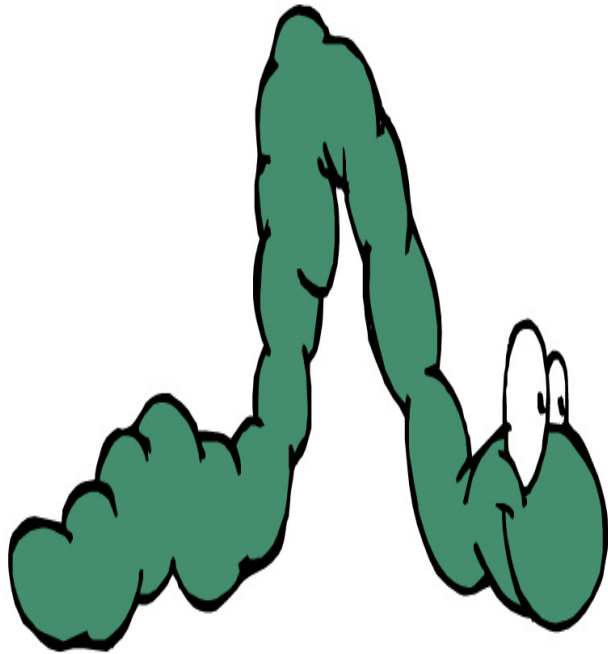
V v

Vogel



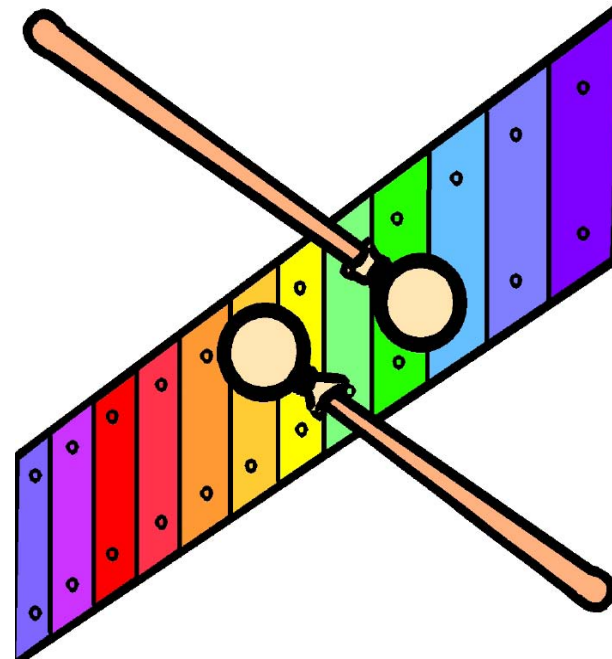
W w

Wurm



X x

Xylophon



Y y

Yak



Z z

Zebra

